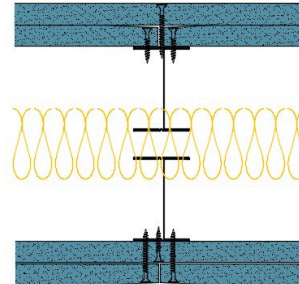


TWI60-K-60(50)(200) - SPEEDLINE System Data Sheet - Version V1 (24-10-23)

Twin SPEEDLINE 60mm 'I' Stud Partition @600mm Ctrs, with 2x Knauf 15mm Soundshield Plus each side, 50mm APR



System Performance Breakdown

Fire Resistance:

BS476 Part 22:1987:

Test Ref & Date or Applied Ref & Report:

Max Height:

Thickness:

Duty Grade: BS 5234: Part 2:1992:

Sound Insulation:

120/120 Minutes (Integrity/Insulation).

BMT/FEP/F14077 - BRE Report P102396-1011B

Refer to Speedline Specification Clause

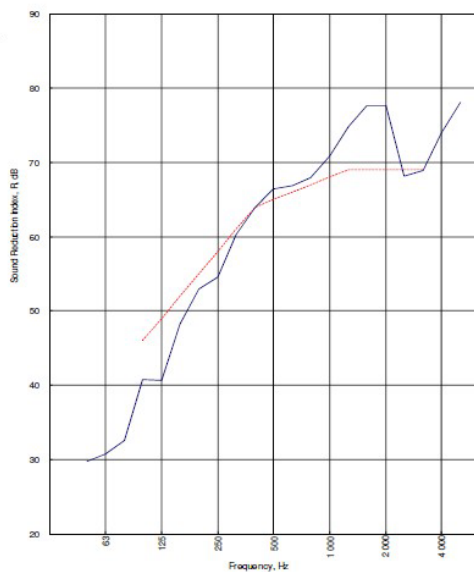
200 mm. (At Base Track, Excluding Finishes)

Severe - Annexes A-F

65 R_w dB, -9 Ctr Date Tested or Assessed Against - TWI50-K-59(50)(200)

Test Code:
H20697AA
Test Date:
09/10/2018

| Freq. Hz | R dB |
|----------|------|
| 50 | 29.8 |
| 63 | 30.7 |
| 80 | 32.6 |
| 100 | 40.8 |
| 125 | 40.7 |
| 160 | 48.2 |
| 200 | 53.0 |
| 250 | 54.6 |
| 315 | 60.3 |
| 400 | 63.9 |
| 500 | 66.4 |
| 630 | 66.9 |
| 800 | 67.9 |
| 1 000 | 70.9 |
| 1 250 | 74.8 |
| 1 600 | 77.6 |
| 2 000 | 77.7 |
| 2 500 | 68.2 |
| 3 150 | 68.9 |
| 4 000 | 74.0 |
| 5 000 | 78.1 |



| | | | |
|---|---|-----------------------|--------------------------|
| Rating according to BS EN ISO 717-1:2013 | R_w (C;Ctr) = 65 (-3;-9) dB | | |
| Evaluation based on laboratory measurement results obtained by an engineering method: | Max dev. 8.3 dB at 125 Hz | | |
| | $C_{50-3150}$ -6 dB | $C_{50-5000}$ -5 dB | $C_{100-5000}$ -2 dB |
| | $C_{125-3150}$ -17 dB | $C_{125-5000}$ -17 dB | $C_{125-100-5000}$ -9 dB |

TESTED AT ONE OF THE UKAS ACCREDITED LABORATORIES BELOW

B.T.C (H-Ref on Graph)

B.R.E

AIRO

S.R.L

Customer: Voestalpine Metsec Plc

BTC 20697A: Page 11 of 14



SPEEDLINE Drywall Systems, Adsetts House, 16 Europa View, Sheffield Business Park, Sheffield, S9 1XH.

Tel: 0114 231 8030.

Email: enquiries@speedlinedrywall.co.uk

(As per the requirements set out in ISO/IEC 17025:2017 regarding test data the results stated have been carried out by voestalpine Metsec plc as part of the contract to supply Speedline Metal Sections to SIG plc)